

# GOING GREEN GREEN FACILITIES @ BEL-AIR

綠色生活@貝沙灣  
屋苑回收設施



Make a Difference in a Community  
為我們的社區帶來改變

Recycling Facilities  
回收設施

Community & Recycling  
Activities 社區及回收活動



貝沙灣

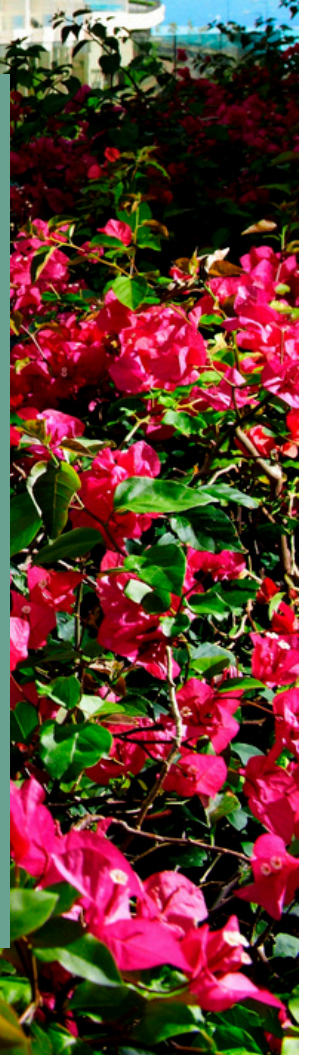


## SUSTAINABLE LUXURIOUS LIVING ENVIRONMENT

### 可持續奢華生活享受

Sustainability does not mean compromising quality or luxury, we are committed to the highest integrity, with premium management for quality living and continue to engage our community in the many ways we can, to support a greener, more sustainable environment within the residences.

可持續並不代表要跟優質生活作出妥協。我們致力為住戶提供卓越物業管理服務，締造理想生活環境，我們將繼續把綠化意識推介予住戶，冀能與大家攜手讓貝沙灣更具可持續性。



# RECYCLING ITEMS 回收項目



## Papers 紙張



All Tower Refuse Storage &  
Material Recovery Rooms  
各樓層垃圾儲藏及物料收集房



Office Paper  
辦公室用紙

Letters & Envelopes  
信紙及信封

Newspaper  
報紙

Cardboard  
卡紙

Magazines/Catalogs/Phone Books  
雜誌/名錄/電話簿

Paperback Books  
平裝版書本



Paper/Magazine Laminated  
with Plastic  
膠面紙張/雜誌

Paper Cups  
紙杯

Napkins, Paper Towels  
餐巾、紙巾

Paper with Contaminated with  
Oil, Food or Paint...etc  
沾有油、食物或油漆紙張

Drink/ Cereal Box  
飲品/穀物包裝盒

Thermal Induction Paper  
熱感紙



Break down and  
flatten cardboard  
boxes  
剪開及壓平紙箱



## Metals 金屬



All Tower Refuse Storage &  
Material Recovery Rooms  
各樓層垃圾儲藏及物料收集房



Steel, Aluminum and  
Metal Containers  
不銹鋼、鋁及鐵容器



Chemical & Paint  
Containers  
化學品及油漆容器



Empty & rinse  
清空及清洗乾淨  
Remove labels & lids  
移除招紙及蓋

Aerosol Spray Can  
噴霧容器

Potato Chips Cans  
薯片罐

# RECYCLING ITEMS 回收項目



## Plastics 塑膠



All Tower Refuse Storage &  
Material Recovery Rooms  
各樓層垃圾儲藏及物料收集房



Plastic containers  
like milk, juice, soft  
drinks, personal care  
and detergent bottles  
塑膠容器例如牛奶、  
果汁、汽水、個人護  
理及清潔劑樽



Plastic Bags  
膠袋

Rubber & Silicon  
Products  
橡膠及矽膠製品

CD & Polyfoam  
光碟及發泡膠



## Glass 玻璃



All Tower Refuse Storage &  
Material Recovery Rooms  
各樓層垃圾儲藏及物料收集房



Bottles and Jars  
玻璃樽及瓶子



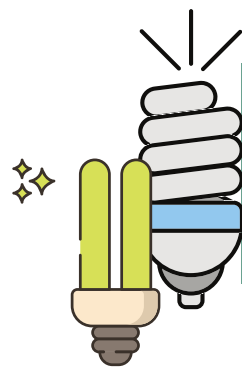
Chemical Containers  
化學品容器

Temper, laminated or  
strengthened glass  
鋼化、夾層或強化玻璃



Empty & rinse  
清空及清洗乾淨  
Remove labels & lids  
移除招紙及蓋

# RECYCLING ITEMS 回收項目



## Fluorescent Lamps 慳電膽及光管



Service Centres  
服務中心



Compact Fluorescent  
Lamps  
慳電膽



Old Style Incandescent  
Bulbs  
舊式烏絲燈膽

Fluorescent Lamps  
(straight tubes and other  
shapes)  
熒光燈管(直管和其他形狀)

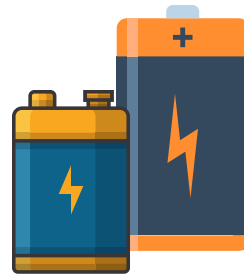
MORE INFO



High Intensity Discharge  
(HID) Lamps  
高強度氣體放電燈



Please used lamps in the  
packaging that comes with new  
lamps before depositing them in  
the collection box for recycling.  
請用新燈管的包裝物料把舊燈管裝  
載好，才將燈管放入收集箱內回收



## Rechargeable Battery 充電池



All Tower Lobbies  
所有大廈大堂



Most of portable  
rechargeable batteries  
generated from  
household  
大部份家用電器及電子  
產品的專用充電池



Single Use Batteries  
一次性電池

Damaged Batteries  
損壞電池

MORE INFO



Cover the battery terminal with masking  
tape. This is a safety precaution to  
prevent contact between terminals or  
other metal surfaces during storage and  
transport.

在電池的金屬端子上貼上遮蔽保護膠紙  
(皺紋膠紙)，防止金屬端子在儲存及運送  
中意外觸碰，造成危險

# RECYCLING ITEMS 回收項目



## Used Clothes 舊衣



**Phase 1 - 3 期:**  
Next to Shuttle Lift Lobby at Podium Level  
平台近穿梭電梯大堂

**Phase 4 - 6 期:**  
Carpark on Podium Level  
near Motorcycle Space No.1  
停車場近平台電單車1號位之附近位置



Clean Clothes,  
Accessories, Textile  
潔淨的衣服、飾物、  
紡織物



Worn-out or Broken Clothing  
破損不潔的衣物

Uniforms  
制服

MORE INFO



Used Intimate Clothing  
(Underwear, Socks or Towels)  
二手內衣、襪或毛巾等貼身衣物

Used Bed Mattresses or  
Bedding, Curtains  
二手床褥、床上用品或窗簾

## Food Waste 廚餘



**Phase 1 - 3 期:**

- Next to Tower 1, Phase 2 at Podium Level  
平台第2期第1座旁
- Next to Tower 7, Phase 1 at Podium Level  
平台第1期第7座旁
- Carpark Area, CP1, outside Shuttle Lift Lobby  
停車場CP1層穿梭升降機大堂外

**Phase 4 - 6 期:**

- Phase 4 & 6 Main Refuse Collection Rooms  
第4及6期總垃圾收集站
- Carpark Area, L7, next to Tower 8A, Phase 6  
第6期停車場L7層近第8A座



Collection Period  
收集時間:  
6:00pm - 10:00pm

Do not forget



Source separated food  
waste only  
只接受經源頭分類的廚餘



Non-recyclable items like  
oversized bones,  
oyster/clam shells,  
packaging materials,  
foamed polystyrene, straws  
and utensils...etc  
不可回收物如大型骨頭、蠔/  
蜆殼、食物包裝物料、發泡  
膠容器、飲管及餐具等

MORE INFO



# RECYCLING ITEMS 回收項目



## Beverage Carton 飲品包裝盒



### Phase 1 - 3 期:

Next to Tower 7, Phase 1 at Podium Level  
平台第1期第7座旁

### Phase 4 - 6 期:

Carpark (Podium Level) near Motorcycle Space No. 1  
停車場近平台電單車1號位之附近位置



All kinds of paper drink  
cartons  
各式飲品紙包盒

MORE INFO



*Do not  
forget*

1. Cut the carton 剪開紙包盒
2. Remove the plastic cover and/or  
straw 除去膠蓋及/或飲管
3. Wash, dry and press  
清洗、晾乾、按扁
4. Put it into designated recycling  
bin 放進指定回收箱



MORE INFO



## Contact Lens Blister Packaging 即棄隱形眼鏡盒



### Phase 1 - 3 期:

Shuttle Lift Lobby 穿梭電梯大堂

### Phase 4 - 6 期:

Service Centre 服務中心



Remove foil, make it clean and dry and Put it  
into collection bag (available at each Tower  
Concierge), envelope or plastic bag, then return  
to collection points

撕走錫紙面，清潔及抹乾眼鏡盒，放入指定收  
集袋(可於大堂索取)、信封或膠袋交回指定收  
集地點

# SMART RECYCLING

## 智能回收



## Smart Recycling System

### 智能回收機



Tower 1 of Phase 4 on Podium Level towards  
Carpark Entrance, next to PL5 Lift  
4期1座平台往 停車場方向  
PL5升降機旁



Papers, Metals, Other  
Plastics  
紙張、金屬、其他塑膠

GREEN\$  
Mobile App  
「綠綠賞」手  
機應用程式



### SMART RECYCLING PROCEDURES



Clean &  
Sort at  
Home  
家中先行  
清潔及分類



Activate  
Recycling Bin  
with Green\$  
QR Code  
以綠綠賞二維  
碼啟動智能回  
收箱



Recycle &  
Accumulate  
Green\$  
Points 放入  
回收物並  
累積綠綠賞  
積分



Redeem Gifts  
with GREEN\$  
(GREEN@  
Ap Lei Chau)  
於綠在鴨洲  
以綠綠賞積分  
換領禮品



## “Bottle-to-Bottle” Recycling Machine

### 「樽樽不息」膠樽智能回收機



Phase 1 - 3 期:  
Shuttle Lift Lobby (next to the used clothing  
recycling bin)  
穿梭電梯大堂 (舊衣回收箱旁)



Beverage  
plastic bottles  
飲料膠樽

立即下載  
Download Now  
CARBON  
COINS



<https://www.facebook.com/carboncoins>



1. Prepare plastic bottles 準備膠樽：  
Rinse used beverage bottles with clean water and keep the barcode intact  
請將用過的飲料膠樽用清水簡單沖洗，保留塑膠樽上的條碼
2. Activate Account 啟動帳戶：  
Download the “Carbon Coins” app and complete registration  
下載「Carbon Coins」手機應用程式，並完成註冊
3. Scan to Recycle 掃碼回收：  
Open the app and scan the QR code displayed on the machine’s screen  
於回收機身屏幕掃描應用程式內的二維碼
4. Insert Bottles 放入膠樽：  
Place plastic bottles one by one into the bottle slot. The system will automatically recognize and count them, instantly crediting points to your Carbon Coins account, accumulated coins can redeem a variety of curated gifts  
將膠樽逐個投入入樽口，系統會自動識別並計算數量，積分將存入「Carbon Coins」帳戶以換取禮品

# COMMUNITY & RECYCLING ACTIVITIES

## 社區及回收活動

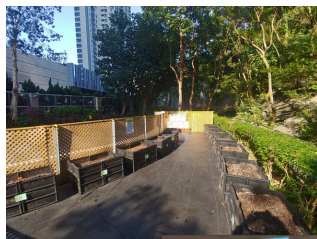


Red Packet Charity Sales & Recycle  
利是封義賣及回收



Chinese New Year Gift Pack Donation  
賀年禮盒轉贈

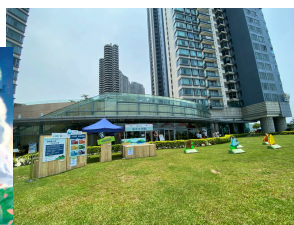
Christmas & Peach Blossom Tree Recycle  
聖誕樹及桃花回收



Community Vegetable Garden  
社區園圃農田



Educational & Eco Events  
教育及環保活動



Green News & Information  
最新消息及資訊

Website 網站



- Recycling figures 環保回收統計
- Upcoming Events 活動預告
- Awards & Recognitions 獎項及嘉許



- Repair & Maintenance 維修及保養
- Landscape ECO Tips 環保小貼士
- Estate Hot Issues 屋苑熱門話題
- Recycling & Community Events 回收及社區活動預告

Mobile App 應用程式

Estate Info →  
Bel-Air Newsletter  
屋苑資訊 →  
貝沙灣通訊



Upcoming Events & News  
活動及資訊

CHECK IT OUT



Website & Mobile App  
網站及流動應用程式



Download on the App Store



ANDROID APP ON Google play

[WWW.BEL-AIR-HK.COM](http://WWW.BEL-AIR-HK.COM)

Subscribe Estate & Club News  
登記接收屋苑及會所資訊

